



## MENTHYL LACTATE

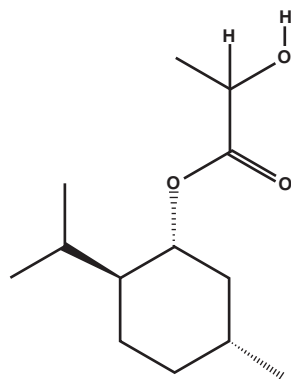
Synonym : L-MENTHYL LACTATE, L-MENTHYL ESTER OF LACTIC ACID.  
INCI NAME- MENTHYL LACTATE

CAS Number : [61597-98-6]

Molecular Formula :  $C_{13}H_{24}O_3$

Molecular Weight : 228.4

Structure :



Characteristics	Specifications
Appearance	White crystalline solid
Assay by G.C. (%)	98 min
Set point (°C)	42 min
Acid value (mg KOH/gm sample)	1.0 max

Storage conditions : Cool and dry, in tightly sealed containers.

Packing : HMHDP drums with polyamide / polyethylene inner bag.

### APPLICATION(S):

- In consumable goods such as chewing gums, soft drinks and in personal care products.